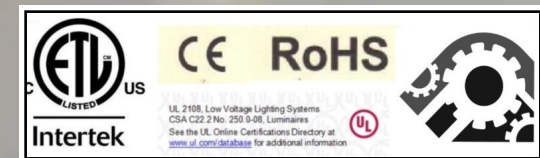


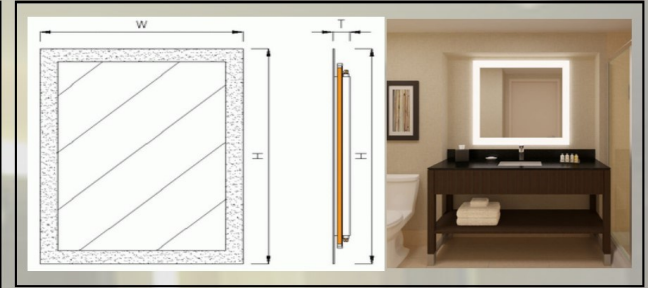
STYLE : WITC-001 Description
 3" FROSTED ALL FOUR SIDES/LED LIGHT ALL FOUR SIDES WITH
 FINGER PRINT PROOF PROTECTION ETL CERTIFICATE UL LISTED DRIVER
Available with out 3" Frosted /Led Light All Four Sides
www.witc.co /danthomas@witc.co/630.405.9252



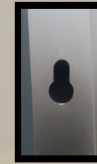


SPECIFICATION:
WITC001-LED 3" FROSTED ALL 4 SIDES WITH
FINGER PRINT PROOF PROTECTION

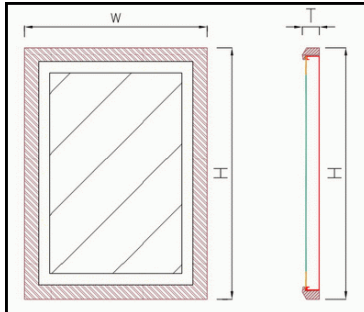
1. Mirror: 5mm thickness copper-free mirror, ecofriendly, mirrors with round edges and round corners no straight edges; finger print protection for frosted areas only.
2. Lights: IP67 water resistant CE listed LED strip smd2835 120 chips per meter IP67; color 2700K-6100K ; 240 chip count available 2700K-6100K. CRI 90. ETL CERTIFICATE FOR FIXTURE ; UL LISTED DRIVER CE, ROHS COMPLIANT. CSA C22.2 NO.250.0-08 LUMINAIRE UL2108
3. Driver: UL listed, IP67 water resistant; 110V with 30" whip for hard wire.
4. Ground wires: a ground wire on the light box and the driver have a ground wire for the junction box centered ; 30 " inch long whip with pig tail for hardwire ; or angle plug.
5. Waterproof anodized Aluminum frames and backbody.
6. Warranty: 5 year warranty electrical components.
7. Fixture should be mounted to a sound surface. Installer should mount hardware in a solid material for proper installation.



Style witc001 with out 3" frosted only led back light

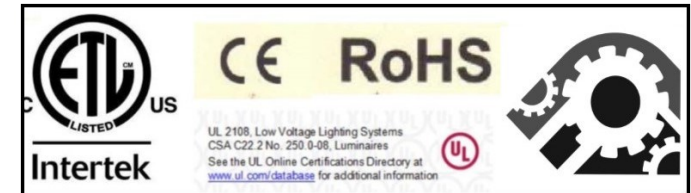


Style
WITC001
 Standard
 Sizes
 24x36
 36x36
 42x36
 48x36



Options.

Options or Upgrades for Style WITC001
 Bluetooth- Digital Clock-
 Digital TV-Radio- 5 Year Warranty-
 Mirror Frames-Magnifying Mirror-
 Single/Dual Shaver Socket-
 Mirror heating pad-Infrared Sensor Switch-
 Touch Switch / Press button Switch-
 Finger Print Proof Protection-
 Side Diffusers-Night Light
 Standard Sizes/Custom Sizes Available



WITC Inc.
 584 Beaconsfield Ave.
 Naperville, IL 60565

www.witc.co

Style WITC001
 Contact: Dan Thomas
 PH:630.405.9252 /danthomas@witc.co

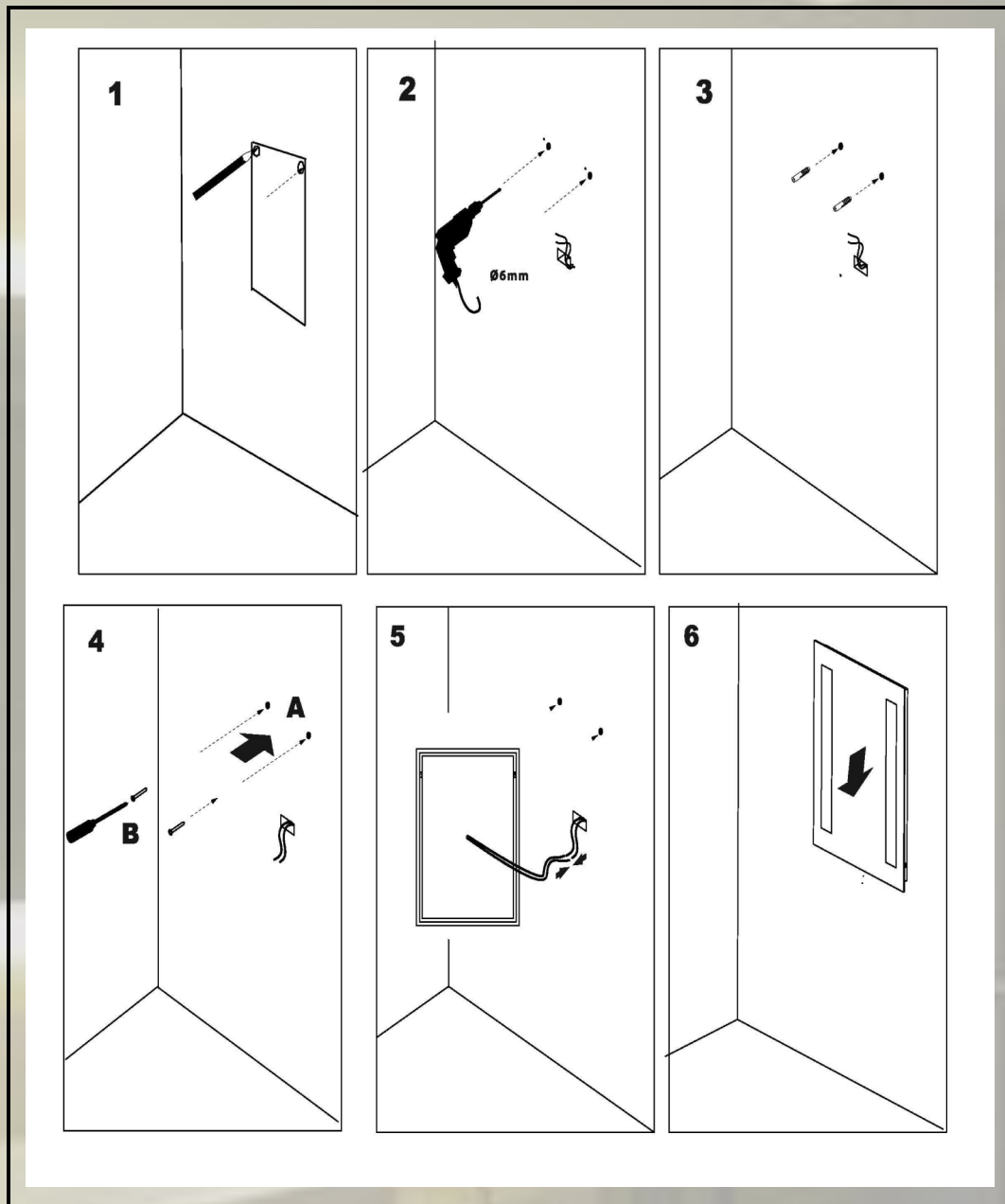
HANGING INSTRUCTION:

WITC STYLES: LED 3" FROSTED ALL 4 SIDES WITH FINGER PRINT PROOF PROTECTION MARK AND MEASURE LIGHT BOX ON WALL. SEE DIAGRAM PROVIDE 30" WHIP. INSERT GROUND WIRE IN GROUNDED CONNECTOR. INSERT HOT AND NEUTRAL WIRE INTO HARDWIRE. ELECTRICAL POWER SHOULD BE CONTROLLED BY A LIGHT SWITCH. FIXTURE SHOULD BE MOUNTED TO A MECHANICALLY SOUND SURFACE SUCH AS WALL STUDS TO SUPPORT ITS WEIGHT. MOUNTING HOLES ARE PROVIDED IN THE ALUMINUM BOX. A BEAD OF SILICONE APPLIED TO THE BOTTOM OF THE BOX AS NEEDED.



PUNCH OUT WITH HOLE AND SLOT ON ALUMINUM CHASSIS.

HOW TO INSTALL:
MEASURE CENTER TO CENTER, USE A LEVEL DRILL HOLES AND INSTALLER MUST SELECT MATCHING PAN HEAD SREW WITH PLASTIC SCREW TYPE ANCHOR. . 50-100 LB.



W.I.T.C. Inc.
Contact Dan Thomas

HANGINGINSTRUCTIONS
danthomas@witc.co

SPECIFICATION:
WITC001-LED 3" FROSTED ALL 4 SIDES WITH
FINGER PRINT PROOF PROTECTION

1.Mirror:5mm thickness copper-free mirror,ecofriendly, mirrors with round edges and round corners no straight edges;finger print protection for frosted areas only.

2.Lights: IP67 water resistant CE listed LED strip smd2835 120 chips per meter IP67;color 2700K-6100K ; 240 chip count available 2700K-6100K. CRI 90.

ETL CERTIFICATE FOR FIXTURE ;UL LISTED DRIVER CE, ROHOS COMPLIANT.CSA C22.2 NO.250.0-08 LUMINAIED UL2108

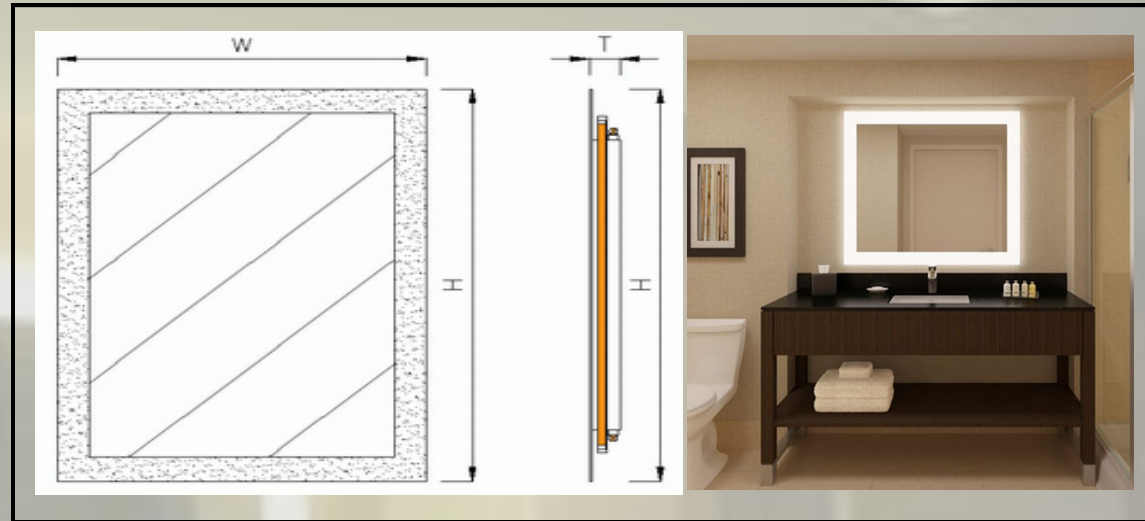
3. Driver: UL listed, IP67 water resistant;110V with 30" whip for hard wire.

4. Ground wires: a ground wire on the light box and the driver have a ground wire for the junction box centered ;30 " inch long whip with pig tail for hardwire ; or angle plug.

5.Waterproof anodized Aluminum frames and backbody.

6. Warranty: 5 year warranty electrical components.

7. Fixture should be mounted to a sound surface. Installer should mount hardware in a solid material for proper installation.



Stylewitc001 with out 3" frosted only led back light

