



STYLE : WITC-002 Description

3" FROSTED TWO SIDES/LED LIGHT TWO SIDES OPTIONS;
TOP/BOTTOM OR LEFT AND RIGHT

Standard Sizes: 24x36-30x30-30x42-36X36-42x36-42x42-48x36-54x42-60X36-60X42

CUSTOM SIZE AVAILABLE AND CUSTOM OPTION

Www.witc.co/danthomas@witc.co/630.405.9252





Style WITC002

Standard Sizes

24x36

36x36

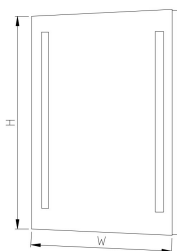
42x36

48x36

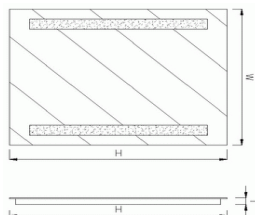
54x36

Custom Sizes

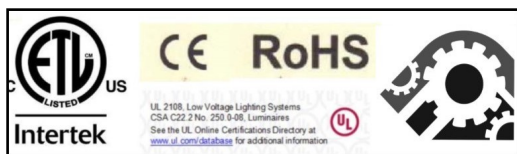
Vertical or Horizontal Led light strip Available



Left and Right

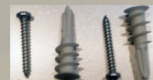
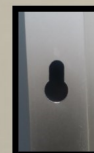


Top and Bottom



SPECIFICATION: 3" FROSTED TWO SIDES/LED LIGHT TWO SIDES OPTIONS; TOP/BOTTOM OR LEFT AND RIGHT 36"WX36"HX3"T O.D.

1. Mirror: 5mm thickness copper-free mirror, ecofriendly, mirrors with round edges and round corners no straight edges. ETL COMPLIANT FIXTURE; UL LISTED DRIVER.
2. Lights: IP67 water resistant CE listed LED strip smd2835 240 chips per meter OR 120 chip per meter. Silicon Gel Waterproof; color 6100K;
3. Driver: UL listed, IP67 water resistant; 110V
4. Ground wires: a ground wire on the light box and the driver have a ground wire for the junction box centered; 24" inch long whip with a pig tail for hard wire or angle plug;
5. Waterproof anodized Aluminum frames and backbody.
6. Warranty: 5 year warranty electrical components.
7. Fixture should be mounted to a sound surface. Installer should mount hardware in a solid material for proper installation.



Style

WITC002

Standard Sizes:

- 24x36
- 30x30
- 30x42
- 36x36
- 42x36
- 42x42
- 48x36
- 54x42
- 60x36

Specifications and Options.

Options or Upgrades for Style WITC002

Bluetooth- Digital Clock-

Digital TV-Radio-

Mirror Frames-Magnifying Mirror-

Single/Dual Shaver Socket-

Mirror heating pad-

Infrared Sensor Switch-

Touch Switch / Press button Switch-

Night Light

Standard Sizes/Custom Sizes Available



Options.

Options or Upgrades for Style WITC002

Bluetooth- Digital Clock-

Digital TV-Radio-

Mirror Frames-Magnifying Mirror-

Single/Dual Shaver Socket-

Mirror heating pad-Infrared Sensor Switch-

Touch Switch / Press button Switch-

Night Light

Standard Sizes/Custom Sizes Available



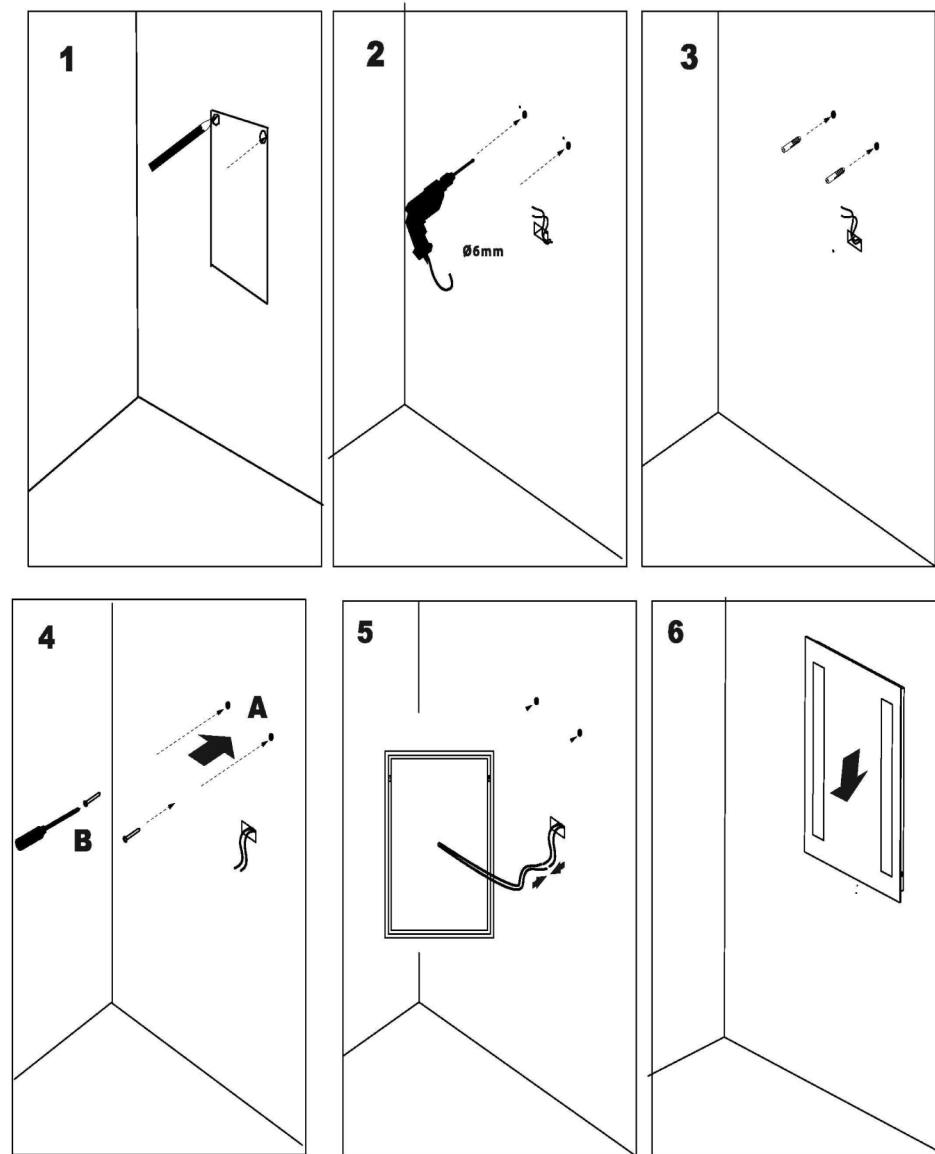
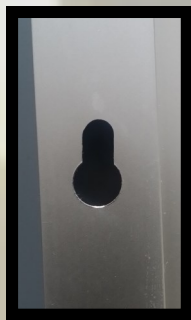
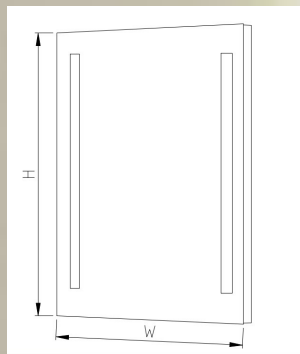
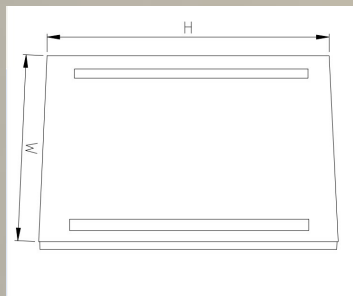
WITC Inc.
584 Beaconsfield Ave.
Naperville, IL 60565

www.witc.co

Style WITC002
Contact: Dan Thomas
PH: 630.405.9252 /danthomas@witc.co

HANGING INSTRUCTION:
WITC002-LED 3" FROSTED TWO SIDES/LED
LIGHT TWO SIDES OPTIONS;
TOP/BOTTOM OR LEFT AND RIGHT

MARK AND MEASURE LIGHT BOX ON WALL .
SEE DIAGRAM PROVIDE 24" WHIP. INSERT
GROUND WIRE IN GROUNDED CONNECTOR.
INSERT HOT AND NEUTRAL WIRE INTO
HARDWIRE. ELECTRICAL POWER SHOULD BE
CONTROLLED BY A LIGHT SWITCH. FIXTURE
SHOULD BE MOUNTED TO A MECHANICALLY
SOUND SURFACE SUCH AS WALL STUDS TO
SUPPORT ITS WEIGHT. MOUNTING HOLES
ARE PROVIDED IN THE ALUMINUM BOX. A
BEAD OF SILICONE APPLIED TO THE BOTTOM
OF THE BOX AS NEEDED.



W.I.T.C. Inc.
Contact Dan Thomas

Style:WITC002
danthomas@witc.co

SPECIFICATION:
3" FROSTED TWO SIDES/LED LIGHT TWO
SIDES OPTIONS;
TOP/BOTTOM OR LEFT AND RIGHT
36"WX36"HX3"T O.D.

1. Mirror: 5mm thickness copper-free mirror, ecofriendly, mirrors with round edges and round corners no straight edges. ETL COMPLIANT FIXTURE; UL LISTED DRIVER.
2. Lights: IP67 water resistant CE listed LED strip smd2835 240 chips per meter OR 120 chip per meter. Silicon Gel Waterproof ; color 6100K;
3. Driver: UL listed, IP67 water resistant; 110V
4. Ground wires: a ground wire on the light box and the driver have a ground wire for the junction box centered ; 24 " inch long whip with a pig tail for hard wire or angle plug;
5. Waterproof anodized Aluminum frames and backbody.
6. Warranty: 5 year warranty electrical components.
7. Fixture should be mounted to a sound surface. Installer should mount hardware in a solid material for proper installation.



Style
WITC002

Standard Sizes:

- 24x36
- 30x30
- 30x42
- 36x36
- 42x36
- 42x42
- 48x36
- 54x42
- 60x36

Specifications and Options.

Options or Upgrades for Style WITC002

Bluetooth- Digital Clock-
Digital TV-Radio-

Mirror Frames-Magnifying Mirror-
Single/Dual Shaver Socket-

Mirror heating pad-

Infrared Sensor Switch-

Touch Switch / Press button Switch-
Night Light

Standard Sizes/Custom Sizes Available

