

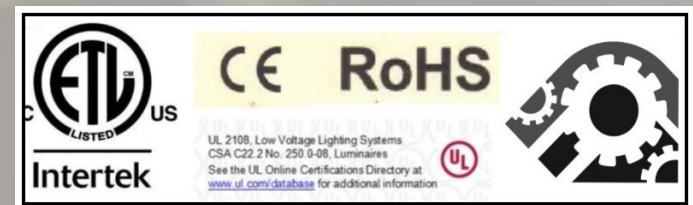
## STYLE : WITC-003 Description

3" FROSTED ALL FOUR SIDES/LED LIGHT ALL FOUR SIDES / INSET 3"-4"-5"

Standard Sizes: 30x30-30x42-36X36-42x36-48x36-54x42-60X42

CUSTOM SIZE AVAILABLE AND CUSTOM OPTION

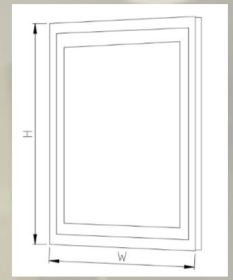
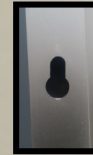
[Www.witc.co](http://www.witc.co) /[danthomas@witc.co](mailto:danthomas@witc.co)/630.405.9252





**SPECIFICATION:**  
**WITC003-LED 3" FROSTED ALL 4 SIDES**  
**INSET 2.5" - 3" - 4" - 5"**  
**36"Wx36"Hx3"T O.D.**

1. Mirror: 5mm thickness copper-free mirror, ecofriendly, mirrors with round edges and round corners no straight edges; finger print protection for frosted areas only.
2. Lights: IP67 water resistant CE listed LED strip Smd2835 120 chips per meter or 240 chip count. Silicon Gel Waterproof ;color 2700-6100K; ETL COMPLIANT FIXTURE; UL LISTED DRIVER
3. Driver: UL listed, IP67 water resistant; 110V
4. Ground wires: a ground wire on the light box and the driver have a ground wire for the junction box centered ;24 " inch long whip with pig tail for hardwire or angle plug;
5. Waterproof anodized Aluminum frames and backbody.
6. Warranty: 5 year warranty electrical components.
7. Fixture should be mounted to a sound surface. Installer should mount hardware in a solid material for proper installation.



**Style**  
**WITC003**

**Standard Sizes:**

- 30x30
- 30x42
- 36x36
- 42x36
- 48x36
- 54x42
- 60x42
- Inquire for custom sizes.

**Options.**

Options or Upgrades for Style WITC003

- Bluetooth- Digital Clock-
- Digital TV-Radio-
- Mirror Frames-Magnifying Mirror-
- Single/Dual Shaver Socket-
- Mirror heating pad-
- Infrared Sensor Switch-
- Touch Switch / Press button Switch-
- Night Light

Standard Sizes/Custom Sizes Available



**Style WITC003**

**Style WITC003**

**Standard Sizes**

24x36

36x36

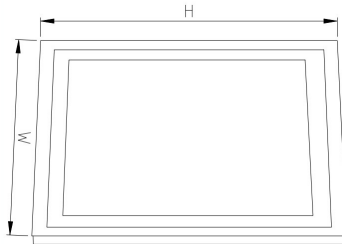
42x36

48x36

54x36

Custom Sizes

Available



**Options.**

Options or Upgrades for Style WITC003

Bluetooth- Digital Clock-

Digital TV-Radio-

Mirror Frames-Magnifying Mirror-

Single/Dual Shaver Socket-

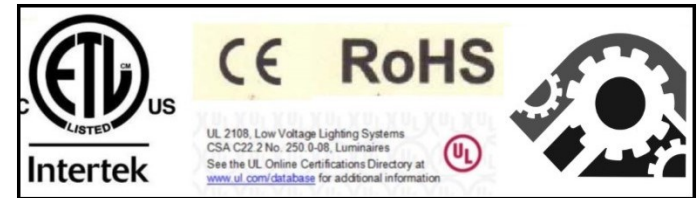
Mirror heating pad-Infrared Sensor

Switch-

Touch Switch / Press button Switch-

Night Light

UL 2108, Low Voltage Lighting Systems  
 CSA C22.2 No. 250.0-08, Luminaires  
 See the UL Online Certifications Directory at  
[www.ul.com/database](http://www.ul.com/database) for additional information



WITC Inc.  
 584 Beaconsfield Ave.  
 Naperville, IL 60565

[www.witc.co](http://www.witc.co)

Style WITC003  
 Contact: Dan Thomas  
 PH:630.405.9252 /danthomas@witc.co



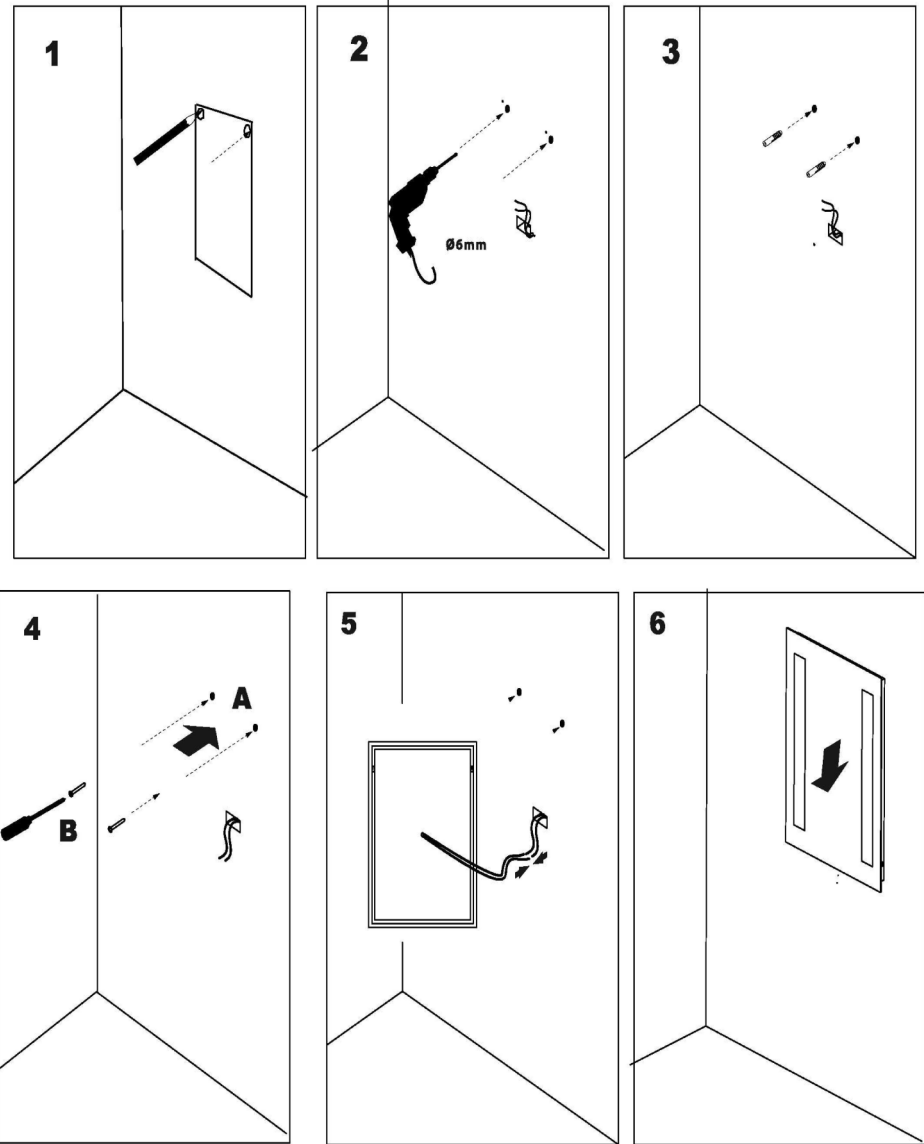
## HANGING INSTRUCTION:

WITC STYLES: LED 3" FROSTED ALL 4 SIDES WITH FINGER PRINT PROOF PROTECTION MARK AND MEASURE LIGHT BOX ON WALL. SEE DIAGRAM PROVIDE 30" WHIP. INSERT GROUND WIRE IN GROUNDED CONNECTOR. INSERT HOT AND NEUTRAL WIRE INTO HARDWIRE. ELECTRICAL POWER SHOULD BE CONTROLLED BY A LIGHT SWITCH. FIXTURE SHOULD BE MOUNTED TO A MECHANICALLY SOUND SURFACE SUCH AS WALL STUDS TO SUPPORT ITS WEIGHT. MOUNTING HOLES ARE PROVIDED IN THE ALUMINUM BOX. A BEAD OF SILICONE APPLIED TO THE BOTTOM OF THE BOX AS NEEDED.



PUNCH OUT WITH HOLE AND SLOT ON ALUMINUM CHASSIS.

HOW TO INSTALL:  
MEASURE CENTER TO CENTER, USE A LEVEL DRILL HOLES AND INSTALLER MUST SELECT MATCHING PAN HEAD SREW WITH PLASTIC SCREW TYPE ANCHOR. . 50-100 LB.



W.I.T.C. Inc.

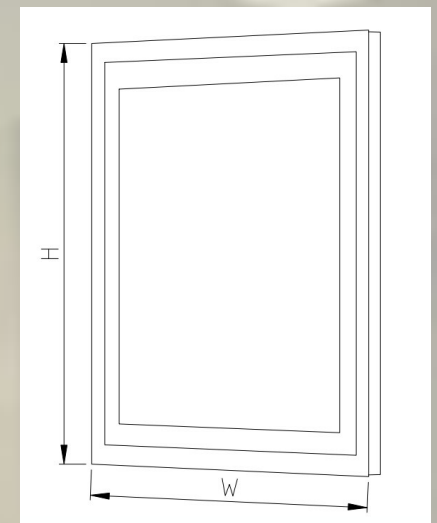
Contact Dan Thomas

HANGINGINSTRUCTIONS

[danthomas@witc.co](mailto:danthomas@witc.co)

**SPECIFICATION:**  
**WITC003-LED 3" FROSTED ALL 4 SIDES**  
**INSET 2.5" - 3" - 4" - 5"**  
**36"WX36"HX3"T O.D.**

1. Mirror: 5mm thickness copper-free mirror, ecofriendly, mirrors with round edges and round corners no straight edges; finger print protection for frosted areas only.
2. Lights: IP67 water resistant CE listed LED strip Smd2835 120 chips per meter or 240 chip count. Silicon Gel Waterproof ; color 2700-6100K; ETL COMPLIANT FIXTURE; UL LISTED DRIVER
3. Driver: UL listed, IP67 water resistant; 110V
4. Ground wires: a ground wire on the light box and the driver have a ground wire for the junction box centered ; 24 " inch long whip with pig tail for hardwire or angle plug;
5. Waterproof anodized Aluminum frames and backbody.
6. Warranty: 5 year warranty electrical components.
7. Fixture should be mounted to a sound surface. Installer should mount hardware in a solid material for proper installation.



## Style WITC003

Standard Sizes:

- 30x30
- 30x42
- 36x36
- 42x36
- 48x36
- 54x42
- 60x42
- Inquire for custom sizes.

## Options.

Options or Upgrades for Style WITC003

- Bluetooth- Digital Clock-
- Digital TV-Radio-
- Mirror Frames-Magnifying Mirror-
- Single/Dual Shaver Socket-
- Mirror heating pad-
- Infrared Sensor Switch-
- Touch Switch / Press button Switch-
- Night Light

Standard Sizes/Custom Sizes Available

