

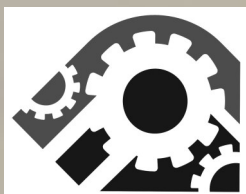
## STYLE : WITC-004 Description

3" FROSTED TWO SIDES/LED LIGHT TWO SIDES /LEFT&RIGHT OR TOP&BOTTOM  
WITH FINGER PRINT PROOF PROTECTION

Standard Sizes: 24x36-30x30-30x42-36x36-42x36-42x42-48x36-54x42

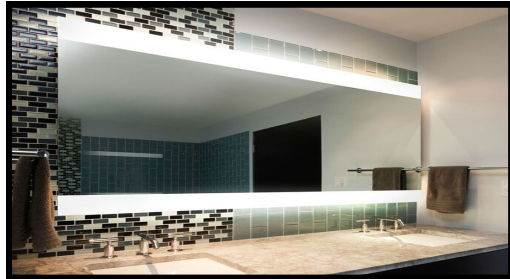
CUSTOM SIZE AVAILABLE AND CUSTOM OPTION

[www.witc.co](http://www.witc.co) /[danthomas@witc.co](mailto:danthomas@witc.co) 630.405.9252





Style WITC004 Left & right only



Style WITC004 Top & Bottom only

#### Style WITC004

##### Standard Sizes

24x36

36x36

42x36

48x36

54x36

Custom Sizes

Available

#### Options.

Options or Upgrades for Style WITC004

Bluetooth- Digital Clock-

Digital TV-Radio-

Mirror Frames-Magnifying Mirror-

Single/Dual Shaver Socket-

Mirror heating pad-Infrared Sensor Switch-

Touch Switch / Press button Switch-

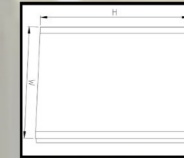
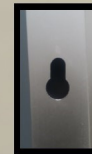
Finger Print Proof Protection-

Side Diffusers-Night Light

Standard Sizes/Custom Sizes Available



**SPECIFICATION:**  
**WITC004-LED 3" FROSTED TWO SIDES WITH**  
**FINGER PRINT PROOF PROTECTION**  
**36" WX 36" H X 3" T O.D. T&B OR L&R**  
 1. Mirror: 5mm thickness copper-free mirror, ecofriendly, mirrors with round edges and round corners no straight edges; finger print protection for frosted areas only.  
 2. Lights: IP67 water resistant CE listed LED strip smd2835 120 chips per or 240 chip count Silicon Gel CRI90 Waterproof; color 2700k-6100k; ETL CERTIFICATE FOR FIXTURE; UL LISTED DRIVER .CE, ROHOS COMPLIANT.  
 CSA C22.2 NO.250.0-08 LUMINAIRE UL2108  
 3. Driver: UL listed, IP67 water resistant; 110V  
 4. Ground wires: a ground wire on the light box and the driver have a ground wire for the junction box centered; 24" inch long whip WITH PIG TAIL FOR HARDWARE;  
 5. Waterproof anodized Aluminum frames and backbody.  
 6. Warranty: 5 year warranty electrical PARTS.  
 7. Fixture should be mounted to a sound surface. Installer should mount hardware in a solid material for proper installation.



#### Style WITC004

##### Standard Sizes:

- 24x36
- 30x30
- 30x32
- 30x42
- 36x36
- 42x36
- 42x42
- 48x36
- 54x42

#### Options.

Options or Upgrades for Style WITC004

Bluetooth- Digital Clock-

Digital TV-Radio-

Mirror Frames-Magnifying Mirror-

Single/Dual Shaver Socket-

Mirror heating pad-

Infrared Sensor Switch-

Touch Switch / Press button Switch-

Finger Print Proof Protection-

Side Diffusers-Night Light



CE RoHS



UL 2108, Low Voltage Lighting Systems  
 CSA C22.2 No. 250.0-08, Luminaires  
 See the UL Online Certifications Directory at  
[www.ul.com/database](http://www.ul.com/database) for additional information



CE RoHS



UL 2108, Low Voltage Lighting Systems  
 CSA C22.2 No. 250.0-08, Luminaires  
 See the UL Online Certifications Directory at  
[www.ul.com/database](http://www.ul.com/database) for additional information

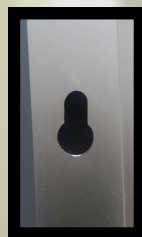
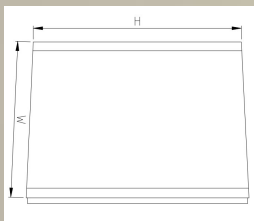
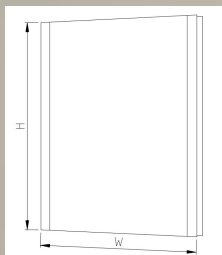
WITC Inc.  
 584 Beaconsfield Ave.  
 Naperville, IL 60565

[www.witcinc.co](http://www.witcinc.co)

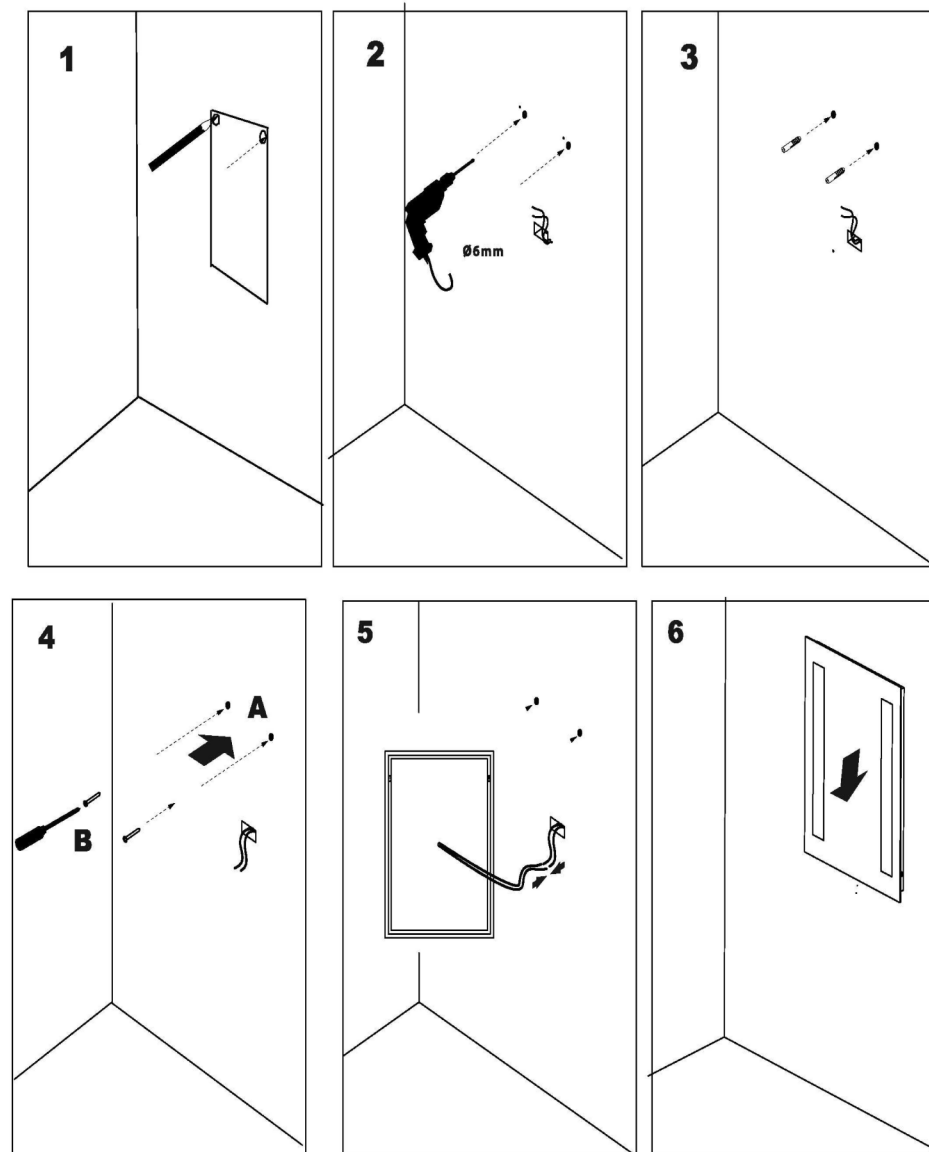
Style WITC004  
 Contact: Dan Thomas  
 PH: 630.405.9252 / [danthomas@witc.co](mailto:danthomas@witc.co)

**HANGING INSTRUCTION:**  
WITC004-LED 3" FROSTED TWO SIDES WITH  
FINGER PRINT PROOF PROTECTION  
36"W X 36"H X 3"T O.D.

MARK AND MEASURE LIGHT BOX ON WALL .  
SEE DIAGRAM PROVIDE 24" WHIP. INSERT  
GROUND WIRE IN GROUNDED CONNECTOR.  
INSERT HOT AND NEUTRAL WIRE INTO  
HARDWIRE. ELECTRICAL POWER SHOULD BE  
CONTROLLED BY A LIGHT SWITCH. FIXTURE  
SHOULD BE MOUNTED TO A MECHANICALLY  
SOUND SURFACE SUCH AS WALL STUDS TO  
SUPPORT ITS WEIGHT. MOUNTING HOLES  
ARE PROVIDED IN THE ALUMINUM BOX. A  
BEAD OF  
SILICONE APPLIED TO THE BOTTOM OF THE  
BOX AS NEEDED.



PUNCH OUT WITH HOLE  
AND SLOT ON ALUMINUM  
CHASSIS.  
HOW TO INSTALL:  
MEASURE CENTER TO  
CENTER, USE A LEVEL DRILL  
HOLES AND  
INSTALLER MUST SELECT  
MATCHING PAN HEAD SREW  
WITH PLASTIC SCREW TYPE  
ANCHOR. . 50-100 LB.



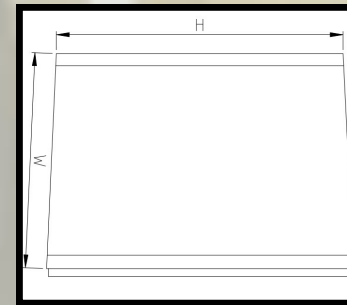
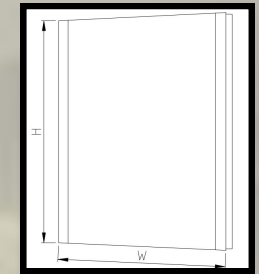
**W.I.T.C. Inc.**  
Contact Dan Thomas

Style: WITC004  
danthomas@witc.co



**SPECIFICATION:**  
**WITC004-LED 3" FROSTED TWO SIDES WITH**  
**FINGER PRINT PROOF PROTECTION**  
**36"WX36"HX3"T O.D. T&B OR L&R**

1. Mirror: 5mm thickness copper-free mirror, ecofriendly, mirrors with round edges and round corners no straight edges; finger print protection for frosted areas only.
2. Lights: IP67 water resistant CE listed LED strip smd2835 120 chips per or 240 chip count Silicon Gel CRI90 Waterproof ; color 2700k-6100k; ETL CERTIFICATE FOR FIXTURE ; UL LISTED DRIVER .CE, ROHOS COMPLIANT.
3. Driver: UL listed, IP67 water resistant; 110V
4. Ground wires: a ground wire on the light box and the driver have a ground wire for the junction box centered ; 24 " inch long whip WITH PIG TAIL FOR HARDWIRE;
5. Waterproof anodized Aluminum frames and backbody.
6. Warranty: 5 year warranty electrical PARTS.
7. Fixture should be mounted to a sound surface. Installer should mount hardware in a solid material for proper installation.



Style WITC004  
 Standard Sizes:

- 24x36
- 30x30
- 30x42
- 36x36
- 42x36
- 42x42
- 48x36
- 54x42

**Options.**

Options or Upgrades for Style WITC004

- Bluetooth- Digital Clock-
- Digital TV-Radio-
- Mirror Frames-Magnifying Mirror-
- Single/Dual Shaver Socket-
- Mirror heating pad-
- Infrared Sensor Switch-
- Touch Switch / Press button Switch-
- Finger Print Proof Protection-
- Side Diffusers-Night Light

