



STYLE : WITC-005 Description Ovals & Circles

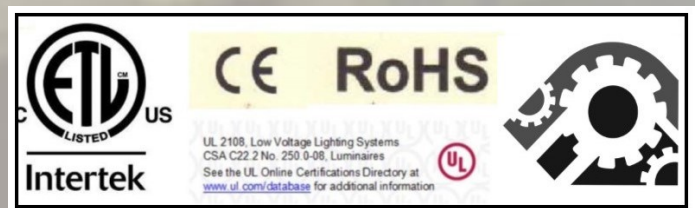
2" or 3" FROSTED / inset available 1.5" -2"- 3"

Ovals & Circles Available FINGER PRINT PROOF PROTECTION

Circle SS: 24x24--30x30-36X36-42X42 Oval SS: 20x30-24x38-26x42

CUSTOM SIZE AVAILABLE AND CUSTOM OPTION

Www.witc.co /danthomas@witc.co/630.405.9252





Circles inset StyleWITC005 Ovals inset



Circles edge StyleWITC005 Ovals edge

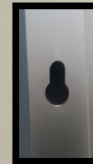
Style WITC005
Circles
Standard Sizes
30x30
36x36
40x40
42x42
46x46
Custom Sizes
Available

Style WITC005
Ovals
Standard Sizes
20x30
24x36
26x42
Custom Sizes
Available



WITC Inc.
584 Beaconsfield Ave.
Naperville, IL 60565

SPECIFICATION:
WITC005-LED 1.5" 2" 2.5" inset with 2" or 3" FROSTED led light Circle or Ovals
1. Mirror: 5mm thickness copper-free mirror, ecofriendly, mirrors with round edges and round corners no straight edges; finger print protection for frosted areas only.
2. Lights: IP67 water resistant CE listed LED strip smd5050 120 chips per meter or 240 chip count CRI 90 ETL CERTIFICATE FOR FIXTURE ; UL LISTED DRIVER CE, ROHOS COMPLIANT. CSA C22.2 NO.250.0-08 LUMINAIRE UL2108
3. Driver: UL listed, IP67 water resistant; 110V
4. Ground wires: a ground wire on the light box and the driver have a ground wire for the junction box centered ; 24 " inch long whip with pig tail for hardwire;
5. Waterproof anodized Aluminum frames and backbody.
6. Warranty: 5 year warranty electrical,
7. Fixture should be mounted to a sound surface. Installer should mount hardware in a solid material for proper installation.



Circles inset StyleWITC005 Ovals inset

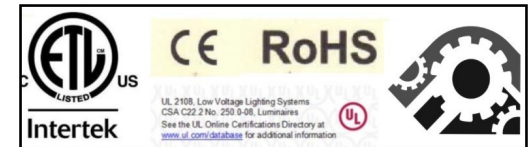


Circles edge StyleWITC005 Ovals edge



Options.

Options or Upgrades for Style WITC005
Bluetooth- Digital Clock- Digital TV-Radio-
Mirror Frames-Magnifying Mirror-
Single/Dual Shaver Socket-Mirror
heating pad-Infrared Sensor Switch-Touch Switch
Standard Sizes/Custom Sizes Available



www.witcinc.co

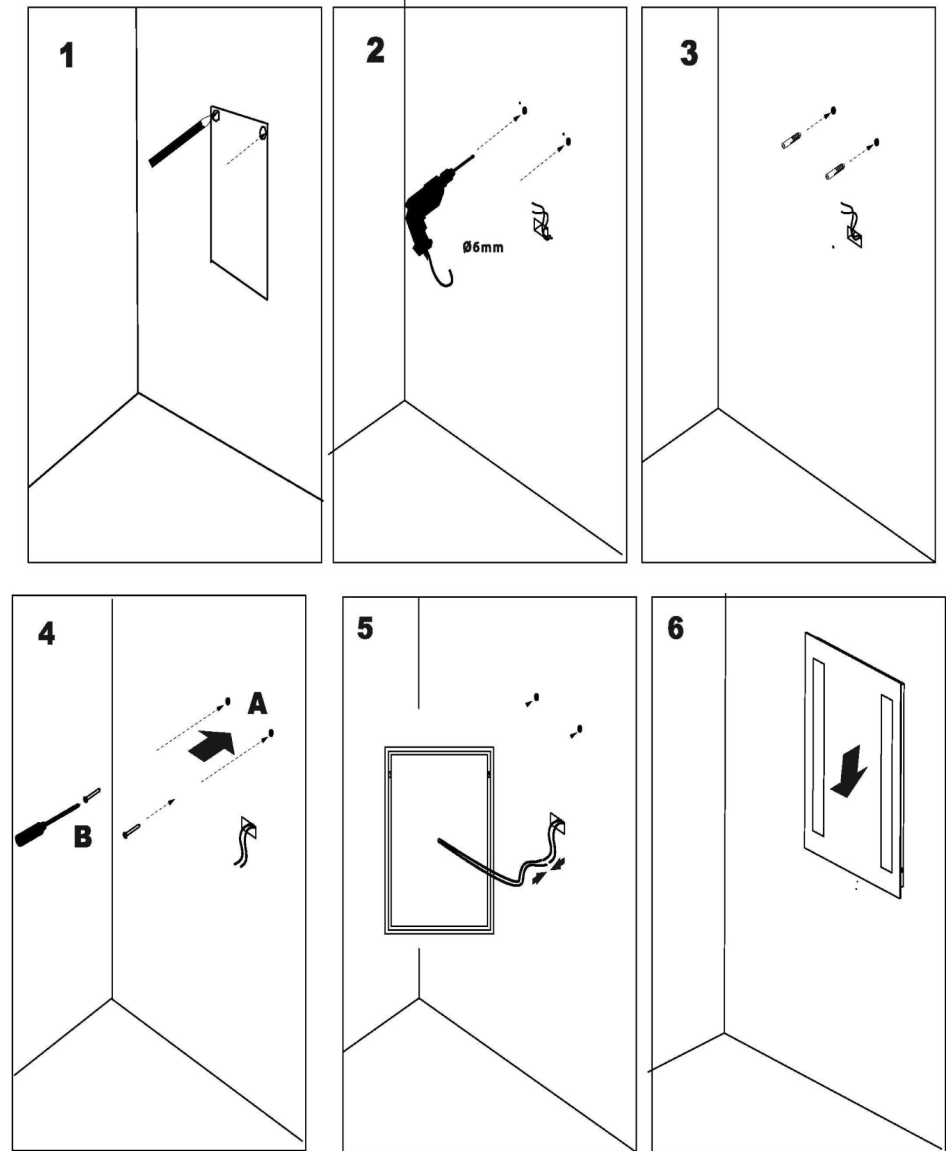
Style WITC005
Contact: Dan Thomas
PH: 630.405.9252 /danthomas@witc.co

HANGING INSTRUCTION:

WITC005-LED

36"WX36"HX3"T O.D.

MARK AND MEASURE LIGHT BOX ON WALL .
SEE DIAGRAM PROVIDE 24" WHIP. INSERT
GROUND WIRE IN GROUNDED CONNECTOR.
INSERT HOT AND NEUTRAL WIRE INTO
HARDWIRE. ELECTRICAL POWER SHOULD BE
CONTROLLED BY A LIGHT SWITCH. FIXTURE
SHOULD BE MOUNTED TO A MECHANICALLY
SOUND SURFACE SUCH AS WALL STUDS TO
SUPPORT ITS WEIGHT. MOUNTING HOLES
ARE PROVIDED IN THE ALUMINUM BOX. A
BEAD OF SILICONE APPLIED TO THE BOTTOM
OF THE BOX AS NEEDED.



W.I.T.C. Inc.

Contact Dan Thomas

Style:WITC005

danthomas@witc.co

SPECIFICATION:

WITC005-LED 1.5" 2" 2.5" inset with 2" or 3" FROSTED led light Circle or Ovals

- 1.Mirror:5mm thickness copper-free mirror,ecofriendly, mirrors with round edges and round corners no straight edges;finger print protection for frosted areas only.**
- 2.Lights: IP67 water resistant CE listed LED strip smd5050 120 chips per meter or 240 chip count CRI 90 ETL CERTIFICATE FOR FIXTURE ;UL LISTED DRIVER CE, ROHOS COMPLIANT.CSA C22.2 NO.250.0-08 LUMINAIRE UL2108**
- 3. Driver: UL listed, IP67 water resistant;110V**
- 4. Ground wires: a ground wire on the light box and the driver have a ground wire for the junction box centered ;24 " inch long whip with pig tail for hardwire;**
- 5.Waterproof anodized Aluminum frames and backbody.**
- 6. Warranty: 5 year warranty electrical,**
- 7. Fixture should be mounted to a sound surface. Installer should mount hardware in a solid material for proper installation.**



Circles inset StyleWITC005



Ovals inset



Circles edge StyleWITC005



Ovals edge



CE RoHS

UL 2108, Low Voltage Lighting Systems
CSA C22.2 No. 250.0-08, Luminaires
See the UL Online Certifications Directory at
www.ul.com/database for additional information

