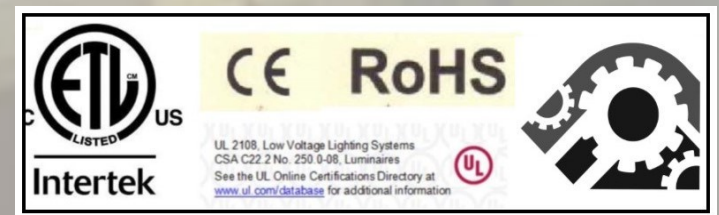




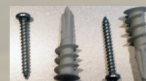
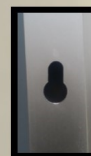
STYLE : WITC-006 Description
2" Black Frame 1.5 " inset 2.5" FROSTED ALL FOUR SIDES
LED LIGHT ALL FOUR SIDES WITH
Www.witc.co /danthomas@witc.co/630.405.9252





Style WITC006

SPECIFICATION:
WITC006- Framed Black 2" Black Frame 1.5 " inset
2.5" FROSTED ALL FOUR SIDES
LED LIGHT ALL FOUR SIDES WITH
1.Mirror:5mm thickness copper-free mirror,ecofriendly, mirrors with round edges and round corners no straight edges;
2.Lights: IP67 water resistant CE listed LED strip smd2835 240 chips per meter or 120 chip count color 2700K; CRI90.
ETL CERTIFICATE FOR FIXTURE ;UL LISTED DRIVER CE, ROHOS COMPLIANT.CSA C22.2 NO.250.0-08 LUMINAIRE UL2108
3. Driver: UL listed, IP67 water resistant;110V with 30" whip pig tail for hard wire or angle plug.
4. Ground wires: a ground wire on the light box and the driver have a ground wire for the junction box centered ;30 " inch long whip with pig tail for hardwire or angle plug;
5.Waterproof anodized Aluminum frames and backbody.
6. Warranty: 5 year warranty electrical,
7. Fixture should be mounted to a sound surface. Installer should mount hardware in a solid



Style WITC006

Standard Sizes

24x36

36x36

42x36

48x36

54x36

Custom Sizes
Available

Options.

Options or Upgrades for Style WITC006

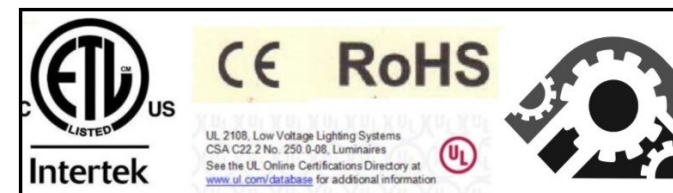
5 Year Warranty-

Mirror Frame Black-Magnifying Mirror-

Mirror heating pad-Infrared Sensor Switch-

Touch Switch / -Night Light

Standard Sizes/Custom Sizes Available



WITC Inc.
584 Beaconsfield Ave.
Naperville, IL 60565

www.witc.co

Style WITC006
Contact: Dan Thomas
PH:630.405.9252 /danthomas@witc.co

HANGING INSTRUCTION:

WITC STYLES 006 with Black Frame:

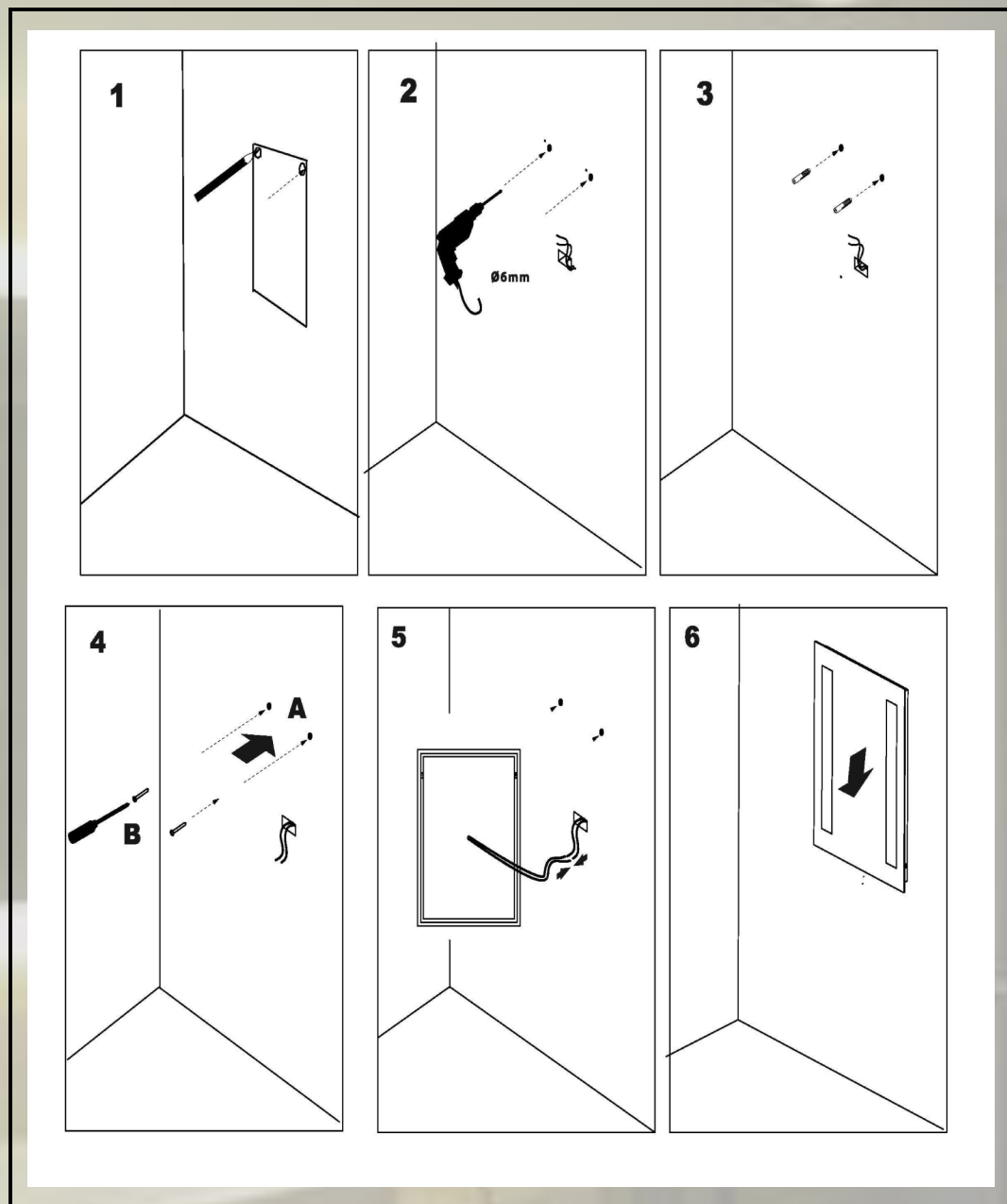
MARK AND MEASURE LIGHT BOX ON WALL .
SEE DIAGRAM PROVIDE 30" WHIP. INSERT
GROUND WIRE IN GROUNDED CONNECTOR.
INSERT HOT AND NEUTRAL WIRE INTO
HARDWIRE. ELECTRICAL POWER SHOULD BE
CONTROLLED BY A LIGHT SWITCH. FIXTURE
SHOULD BE MOUNTED TO A MECHANICALLY
SOUND SURFACE SUCH AS WALL STUDS TO
SUPPORT ITS WEIGHT. MOUNTING HOLES
ARE PROVIDED IN THE ALUMINUM BOX. A
BEAD OF
SILICONE APPLIED TO THE BOTTOM OF THE
BOX AS NEEDED.



PUNCH OUT WITH HOLE
AND SLOT ON ALUMINUM
CHASSIS.

HOW TO INSTALL:

MEASURE CENTER TO
CENTER, USE A LEVEL DRILL
HOLES AND
INSTALLER MUST SELECT
MATCHING PAN HEAD SREW
WITH PLASTIC SCREW TYPE
ANCHOR. . 50-100 LB.



W.I.T.C. Inc.
Contact Dan Thomas

WITC STYLES
danthomas@witc.co

SPECIFICATION:

**WITC006– Framed Black 2" Black Frame 1.5 " inset
2.5" FROSTED ALL FOUR SIDES
LED LIGHT ALL FOUR SIDES WITH**

1.Mirror:5mm thickness copper-free mirror,ecofriendly, mirrors with round edges and round corners no straight edges;

**2.Lights: IP67 water resistant CE listed LED strip
smd2835 240 chips per meter or 120 chip count color 2700K;
CRI90.**

**ETL CERTIFICATE FOR FIXTURE ;UL LISTED DRIVER
CE, ROHOS COMPLIANT.CSA C22.2 NO.250.0-08 LUMINAIED
UL2108**

**3. Driver: UL listed, IP67 water resistant;110V with 30" whip pig
tail for hard wire or angle plug.**

**4. Ground wires: a ground wire on the light box and the driver
have a ground wire for the junction box centered ;30 " inch long
whip with pig tail for hardwire or angle plug;**

5.Waterproof anodized Aluminum frames and backbody.

6. Warranty: 5 year warranty electrical,

**7. Fixture should be mounted to a sound surface. Installer should
mount hardware in a solid**

