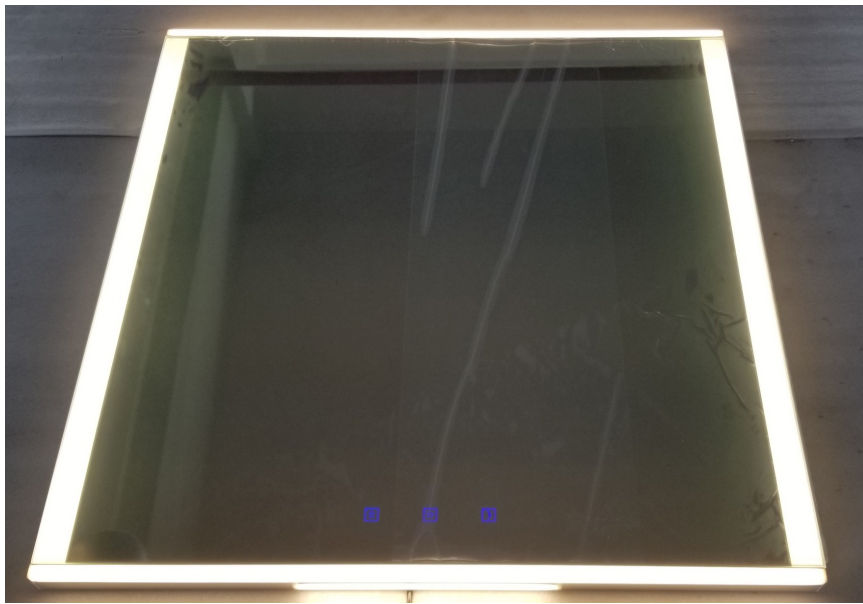


STYLE : WITC-013Description
Diffuser LEFT AND RIGHT SIDE WITH DIRECT LIGHT TOP AND BOTTOM
 Standard Sizes: 24x36-36x36-42x36-48x36-54x36
 CUSTOM SIZE AVAILABLE AND CUSTOM OPTION



Specifications and Options.

Options or Upgrades for Style WITC013

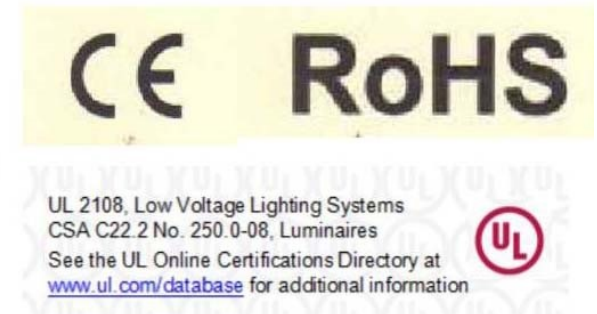
Bluetooth- Digital Clock- Digital TV-Radio-

Mirror Frames-Magnifying Mirror-Single/Dual Shaver

Socket-Mirror heating pad-Infrared Sensor Switch-

Touch Switch / Press button Switch- Night Light

Standard Sizes/Custom Sizes Available



Style WITC013 Diffuser LEFT AND RIGHT SIDE 1.5
Frosted Backlight, Top and Bottom Direct Light



Style WITC013

Standard Sizes

24x36

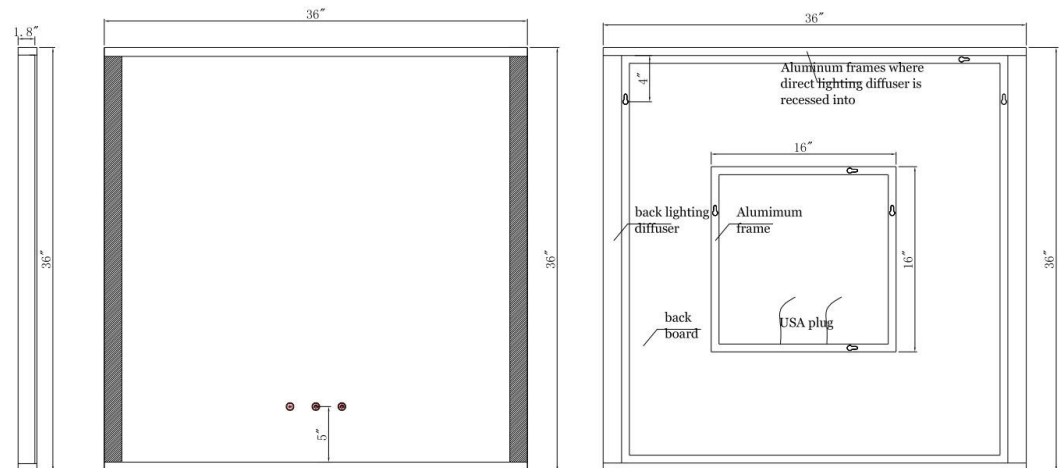
36x36

42x36

48x36

54x36

Custom Sizes
Available



WITC Inc.
584 Beaconsfield Ave.
Naperville, IL 60565

www.witcinc.com

Style WITC013

Contact: Dan Thomas

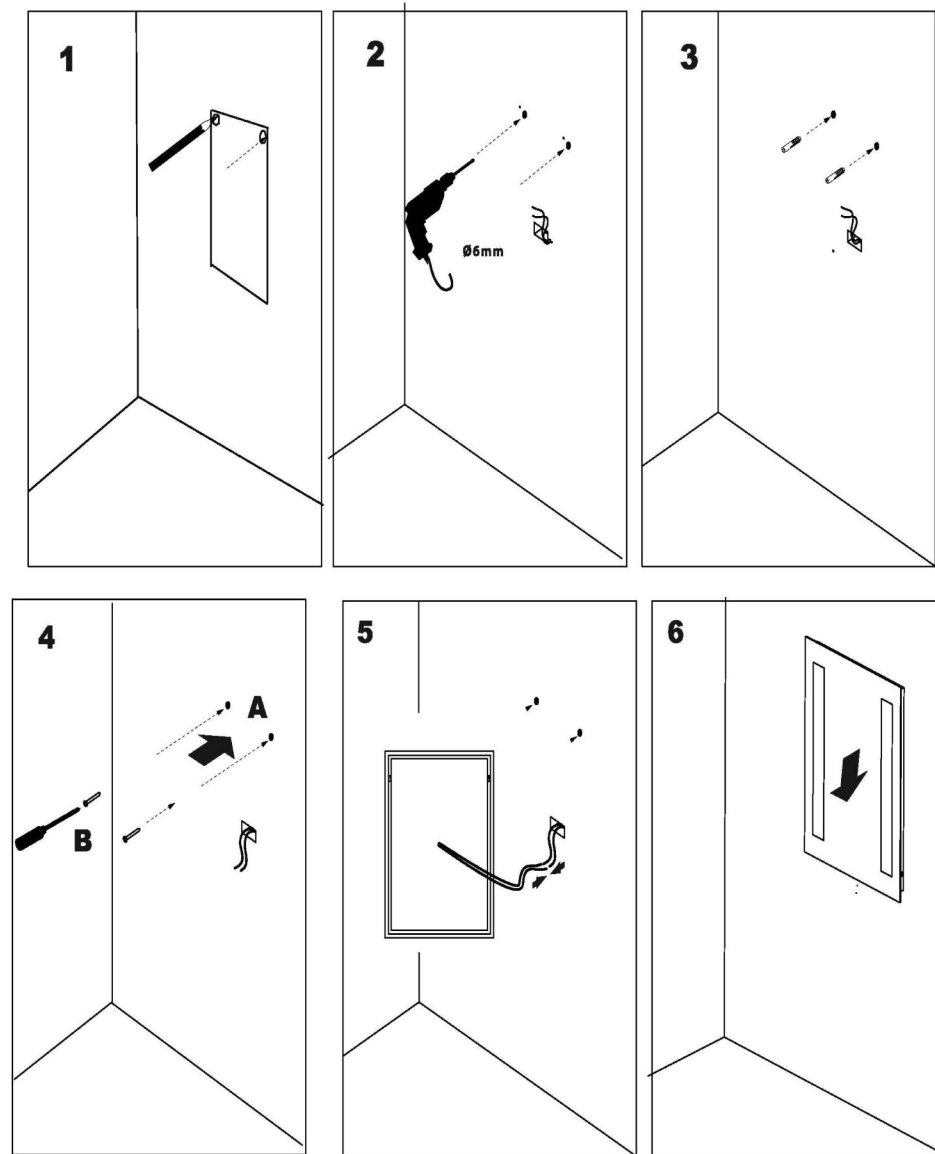
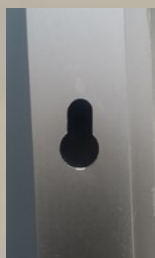
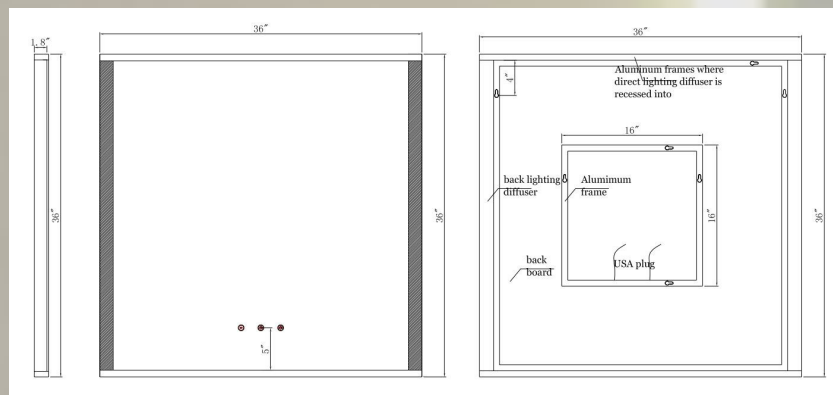
PH:630.405.9252 /dan.witc@gmail.com

HANGING INSTRUCTION:

WITC013– **Diffusers left and right with direct light top and bottom.**

MEASURE SLOT TO SLOT USE PAN HEAD SCREW.

MARK AND MEASURE LIGHT BOX ON WALL . SEE DIAGRAM PROVIDE 24" WHIP WITH PIG TAIL FOR HARDWIRE. INSERT GROUND WIRE IN GROUNDED CONNECTOR. INSERT HOT AND NEUTRAL WIRE INTO HARDWIRE. ELECTRICAL POWER SHOULD BE CONTROLLED BY A LIGHT SWITCH. FIXTURE SHOULD BE MOUNTED TO A MECHANICALLY SOUND SURFACE SUCH AS WALL STUDS TO SUPPORT ITS WEIGHT. MOUNTING HOLES ARE PROVIDED IN THE ALUMINUM BOX. A BEAD OF SILICONE APPLIED TO THE BOTTOM OF THE BOX AS NEEDED.



W.I.T.C. Inc.
Contact Dan Thomas

Style:WITC013
dan.witc@gmail.com

SPECIFICATION

WITC013; Diffuser left and right sides with direct light top and bottom :IP67 water resistant CE listed LED strip smd2835 240 chip per meter 2700K

Or smd 2835 120 chip count per meter.

1.Mirror:5mm thickness copper-free mirror,ecofriendly, mirrors with round edges and round corners no straight edges;finger print protection for frosted areas only. Touch sensor dimmers for control on left and right and dimmer for top and bottom light output. Touch sensor switch for night light feature .

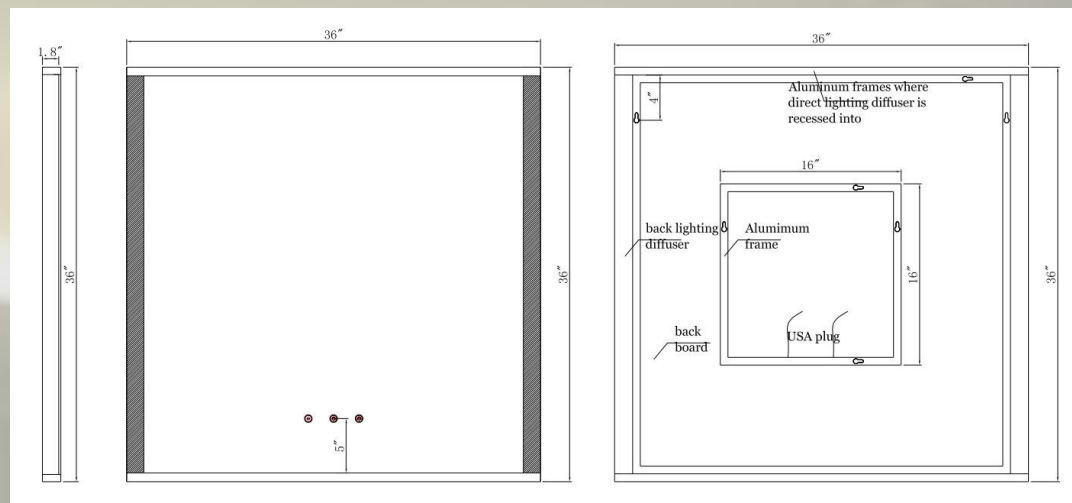
2.Lights: IP67 water resistant CE listed LED strip smd2835 240 chips per meter or 120 chip count Silicon Gel Waterproof ;color 2700K;
ETL CERTIFICATE FOR FIXTURE ;UL LISTED DRIVER CE, ROHOS COMPLIANT.CSA C22.2 NO.250.0-08 LUMINAIRE UL2108

3. Driver: UL listed, IP67 water resistant;110V

4. Ground wires: a ground wire on the light box and the driver have a ground wire ;24 " inch long whip with pig tail or angle plug same cost.

5.Waterproof anodized Aluminum frames and backbody.

6. Warranty: 5 year warranty electrical, components.



Style WITC013

Standard Sizes:

- 24x36
- 36x36
- 42x36
- 48x36
- 54x36
- Inquire for custom sizes.

Specifications and Options.

Options or Upgrades for Style WITC013

Bluetooth- Digital Clock-

Digital TV-Radio-

Mirror Frames-Magnifying Mirror-

Single/Dual Shaver Socket-

Mirror heating pad-

Infrared Sensor Switch-

Touch Switch / Press button Switch-

Side Diffusers-Night Light

Standard Sizes/Custom Sizes Available



CE RoHS

UL 2108, Low Voltage Lighting Systems
CSA C22.2 No. 250.0-08, Luminaires
See the UL Online Certifications Directory at
www.ul.com/database for additional information

