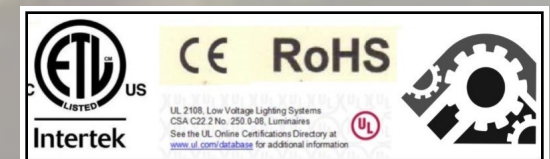




STYLE : WITC-008 Description

Aluminum Frame with frosted stripes left and right led light

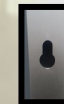
www.witc.co /danthomas@witc.com/630.405.9252





Style WITC008 aluminum frame with frosted led light strip 2" wide left and right

- SPECIFICATION:**
WITC008— aluminum frame mirror with led light strip left and right.
- 1.Mirror:5mm thickness copper-free mirror,ecofriendly, mirrors with round edges and round corners no straight edges;
 - 2.Lights: IP67 water resistant CE listed LED strip smd2835 240 chips per meter IP67;color 2700K; ETL CERTIFICATE FOR FIXTURE ;UL LISTED DRIVER CE, ROHOS COMPLIANT.CSA C22.2 NO.250.0-08 LUMINAIRE UL2108
 3. Driver: UL listed, IP67 water resistant;110V with 30" whip pig tail for hard wire.
 4. Ground wires: a ground wire on the light box and the driver have a ground wire for the junction box centered ;30 " inch long whip;with an angle plug or pig tail for hard wire.
 - 5.Waterproof anodized Aluminum frames and backbody.
 6. Warranty: 5 year warranty electrical parts.
 7. Fixture should be mounted to a sound surface. Installer should mount hardware in a solid material for proper installation.



STYLE : WITC-008 Description
 Aluminum frame with mirror led light strip left and right .
www.witc.co/danthomas@witc.co /630.405.9252

Style WITC008

Standard Sizes

24x36

36x36

42x36

48x36

54x36

Custom Sizes
 Available



Options.

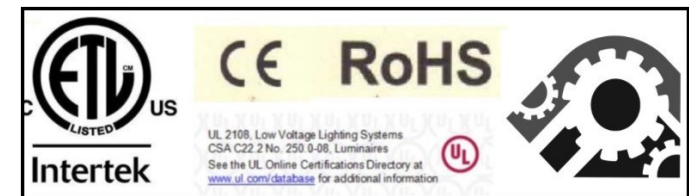
5 Year Warranty-

Aluminum frame with

led light let and right side 2" wide frosted

Standard Sizes/Custom Sizes Available

ETL Certificate; UL listed Driver



Style WITC008

Contact: Dan Thomas

PH:630.405.9252 /danthomas@witc.co

www.witc.co

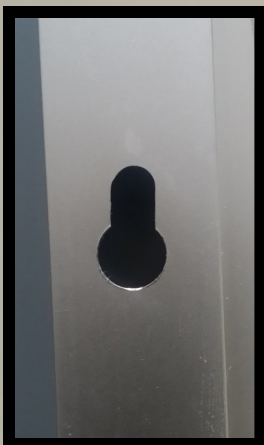


WITC Inc.
 584 Beaconsfield Ave.
 Naperville, IL 60565

HANGING INSTRUCTION:

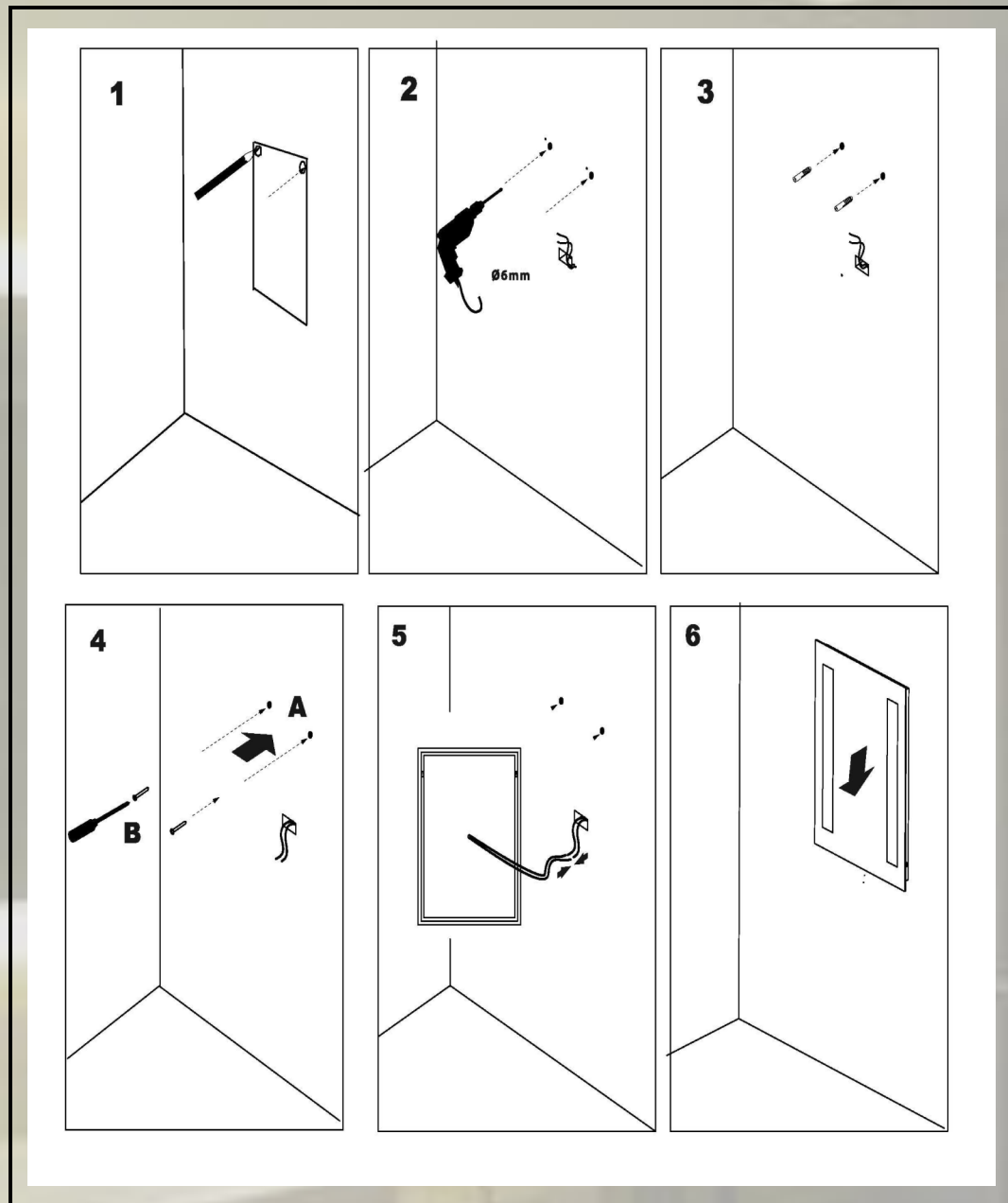
WITC STYLES 008 aluminum frame with led light strip left and right 2" wide.

MARK AND MEASURE LIGHT BOX ON WALL .
SEE DIAGRAM PROVIDE 30" WHIP. INSERT
GROUND WIRE IN GROUNDED CONNECTOR.
INSERT HOT AND NEUTRAL WIRE INTO
HARDWIRE. ELECTRICAL POWER SHOULD BE
CONTROLLED BY A LIGHT SWITCH. FIXTURE
SHOULD BE MOUNTED TO A MECHANICALLY
SOUND SURFACE SUCH AS WALL STUDS TO
SUPPORT ITS WEIGHT. MOUNTING HOLES
ARE PROVIDED IN THE ALUMINUM BOX. A
BEAD OF
SILICONE APPLIED TO THE BOTTOM OF THE
BOX AS NEEDED.



PUNCH OUT WITH HOLE
AND SLOT ON ALUMINUM
CHASSIS.

HOW TO INSTALL:
MEASURE CENTER TO
CENTER, USE A LEVEL DRILL
HOLES AND
INSTALLER MUST SELECT
MATCHING PAN HEAD SREW
WITH PLASTIC SCREW TYPE
ANCHOR. . 50-100 LB.



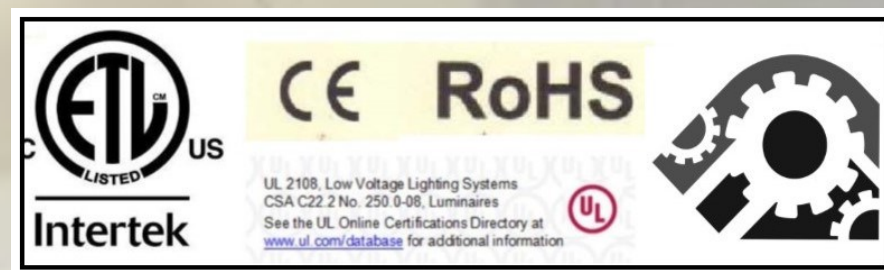
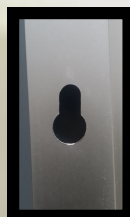
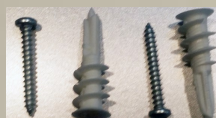
W.I.T.C. Inc.
Contact Dan Thomas

WITC STYLES
danthomas@witc.co

SPECIFICATION:

WITC008— aluminum frame mirror with led light stip left and right.

- 1.Mirror:5mm thickness copper-free mirror,ecofriendly, mirrors with round edges and round corners no straight edges;
- 2.Lights: IP67 water resistant CE listed LED strip smd2835 240 chips per meter IP67;color 2700K; ETL CERTIFICATE FOR FIXTURE ;UL LISTED DRIVER CE, ROHOS COMPLIANT.CSA C22.2 NO.250.0-08 LUMINAIRE UL2108
3. Driver: UL listed, IP67 water resistant;110V with 30" whip pig tail for hard wire.
4. Ground wires: a ground wire on the light box and the driver have a ground wire for the junction box centered ;30 " inch long whip;with an angle plug or pig tail for hard wire.
- 5.Waterproof anodized Aluminum frames and backbody.
6. Warranty: 5 year warranty electrical parts.
7. Fixture should be mounted to a sound surface. Installer should mount hardware in a solid material for proper installation.



STYLE : WITC-008 Description
Aluminum frame with mirror led light strip left and right .
www.witc.co/danthomas@witc.co /630.405.9252