



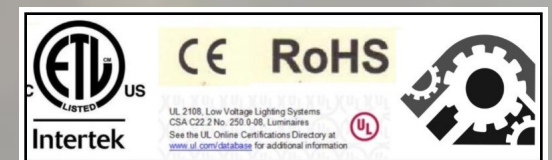
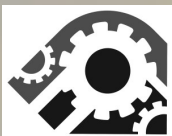
STYLE : WITC-009 Description

2' INCH inset mirror / 3" frosted; led light top only

Standard Sizes: 24x36-30x30-30x42-36X36-42x36-42x42-48x36-54x42-60X36-60X42

CUSTOM SIZE AVAILABLE AND CUSTOM OPTION

www.witc.co/danthomas@witc.co /630.405.9252





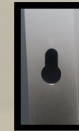
Style witc009 3" wide frosted top only inset 3" left top right

SPECIFICATION
WITC009– 3' INCH inset left top right mirror / 3" frosted; led light top only ;IP67 water resistant CE listed LED strip smd2835 120-240 chip per meter
 2700K-6100K CRI 90
 1. Mirror: 5mm thickness copper-free mirror, ecofriendly, mirrors with round edges and round corners no straight edges; finger print protection for frosted areas only.
 2. Lights: IP67 water resistant CE listed LED strip smd2835 240 chips per meter or 120 chip count Silicon Gel Waterproof ;color 2700K-6100K; ETL CERTIFICATE FOR FIXTURE ;UL LISTED DRIVER CE, ROHOS COMPLIANT. CSA C22.2 NO.250.0-08 LUMINAIRE UL2108
 3. Driver: UL listed, IP67 water resistant; 110V
 4. Ground wires: a ground wire on the light box and the driver have a ground wire ;30" inch long whip with pig tail or angle plug .
 5. Waterproof anodized Aluminum frames and backbody.
 6. Warranty: 5 year warranty electrical, components.
 7. Fixture should be mounted to a sound surface. Installer should mount hardware in a solid material for proper installation.

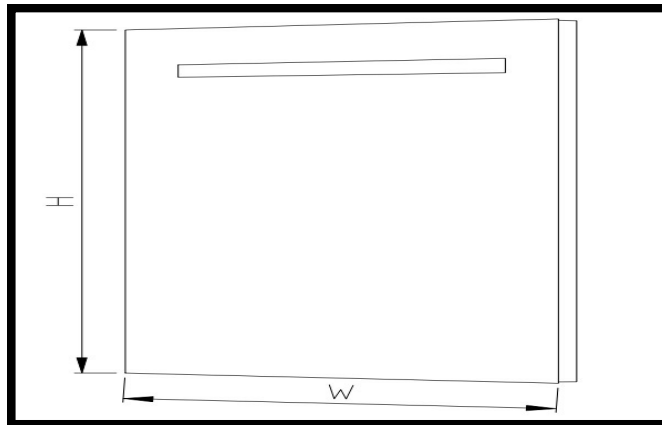


Style WITC009
 Standard Sizes:
 • 24x36
 • 36x36
 • 42x36
 • 48x36
 • 54x36
 • Inquire for custom sizes.

Options.
 Options or Upgrades for Style WITC009
 Bluetooth- Digital Clock- Digital TV-Radio- Mirror Frames-Magnifying Mirror- Single /Dual Shaver Socket- Mirror heating pad- Infrared Sensor Switch- Touch Switch / Press button Switch- Side Diffusers-Night Light

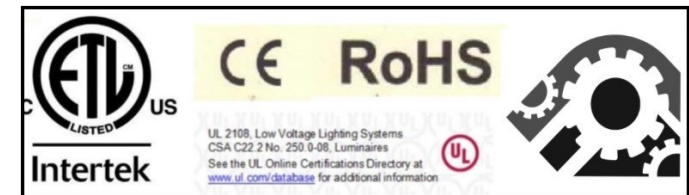


Style WITC009
 Standard Sizes
 24x36
 36x36
 42x36
 48x36
 54x36
 Custom Sizes Available



Options.

Options or Upgrades for Style WITC009
 Bluetooth- Digital Clock- Digital TV-Radio- Mirror Frames-Magnifying Mirror- Single / Dual Shaver Socket- Mirror heating pad- Infrared Sensor Switch- Touch Switch / Press button Switch- Night Light
 Standard Sizes/Custom Sizes Available



WITC Inc.
 584 Beaconsfield Ave.
 Naperville, IL 60565

www.witc.co

Style WITC009
 Contact: Dan Thomas
 PH:630.405.9252 /danthomas@witc.co

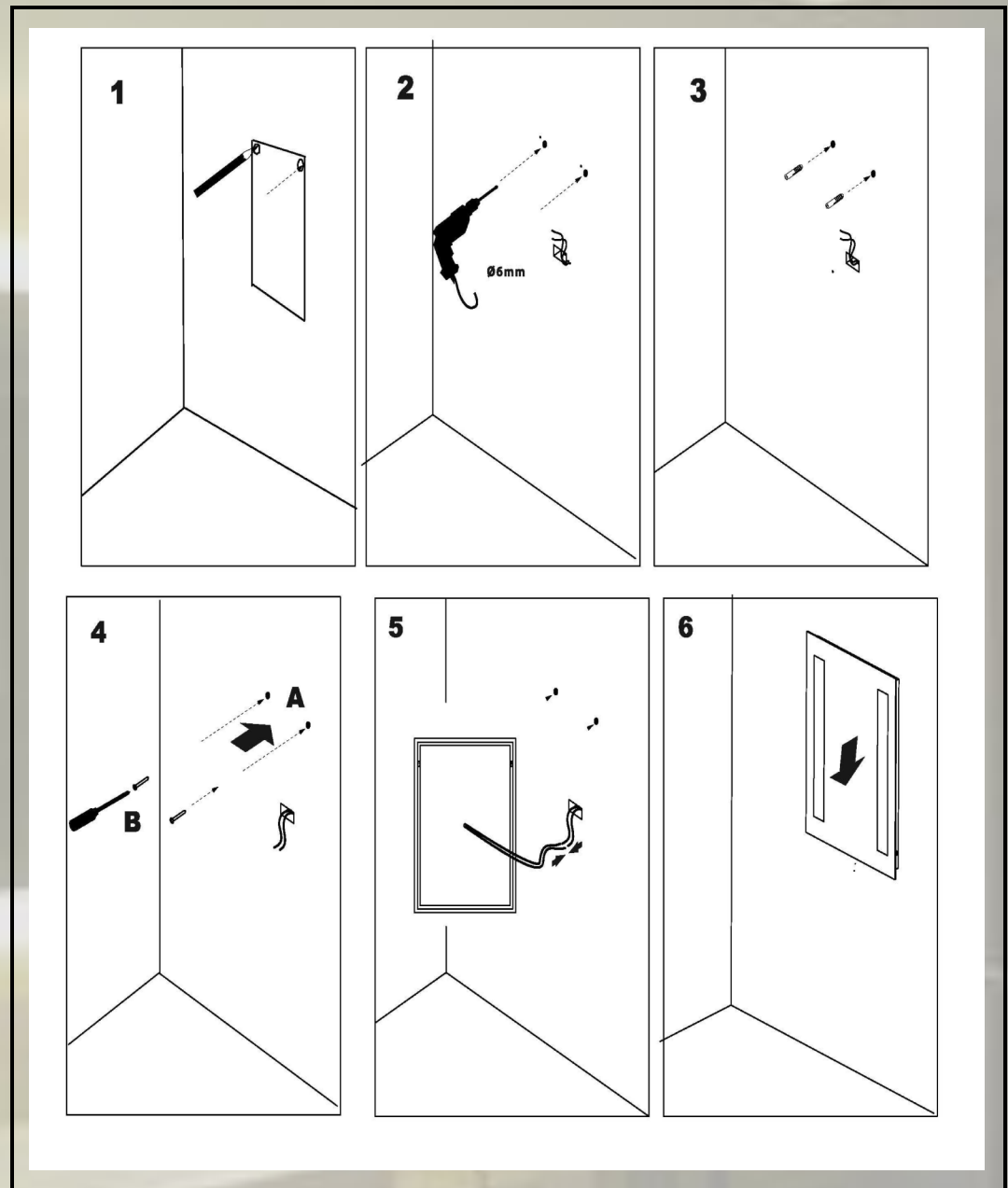
HANGING INSTRUCTION:
WITC009– 3' INCH inset mirror / 3" frosted; led
light top only ;IP67 water resistant CE listed
LED strip smd2835 120-240 chip per meter

2700K-6100K

MEASURE SLOT TO SLOT USE PAN HEAD SCREW.
 MARK AND MEASURE LIGHT BOX ON WALL . SEE
 DIAGRAM PROVIDE 24" WHIP. INSERT GROUND
 WIRE IN GROUNDED CONNECTOR. INSERT HOT
 AND NEUTRAL WIRE INTO HARDWIRE. ELECTRICAL
 POWER SHOULD BE CONTROLLED BY A LIGHT
 SWITCH. FIXTURE SHOULD BE MOUNTED TO A ME-
 CHANICALLY SOUND SURFACE SUCH AS WALL
 STUDS TO SUPPORT ITS WEIGHT. MOUNTING
 HOLES
 ARE PROVIDED IN THE ALUMINUM BOX. A BEAD OF



PUNCH OUT WITH HOLE
 AND SLOT ON ALUMINUM
 CHASSIS.
 HOW TO INSTALL:
 MEASURE CENTER TO
 CENTER, USE A LEVEL DRILL
 HOLES AND
 INSTALLER MUST SELECT
 MATCHING PAN HEAD SREW
 WITH PLASTIC SCREW TYPE
 ANCHOR. . 50-100 LB.



W.I.T.C. Inc.
 Contact Dan Thomas

Style:WITC009
 danthomas@witc.co

SPECIFICATION

WITC009– 3' INCH inset left top right mirror / 3" frosted; led light top only ;IP67 water resistant CE listed LED strip smd2835 120-240 chip per meter

2700K-6100K CRI 90

1. Mirror: 5mm thickness copper-free mirror, ecofriendly, mirrors with round edges and round corners no straight edges; finger print protection for frosted areas only.

2. Lights: IP67 water resistant CE listed LED strip smd2835 240 chips per meter or 120 chip count Silicon Gel Waterproof ;color 2700K-6100K;

ETL CERTIFICATE FOR FIXTURE ;UL LISTED DRIVER CE, ROHOS COMPLIANT. CSA C22.2 NO.250.0-08 LUMINAIRE UL2108

3. Driver: UL listed, IP67 water resistant; 110V

4. Ground wires: a ground wire on the light box and the driver have a ground wire ;30 " inch long whip with pig tail or angle plug .

5. Waterproof anodized Aluminum frames and backbody.

6. Warranty: 5 year warranty electrical, components.

7. Fixture should be mounted to a sound surface. Installer should mount hardware in a solid material for proper installation.



Style WITC009
Standard Sizes:

- 24x36
- 36x36
- 42x36
- 48x36
- 54x36
- Inquire for custom sizes.

Options.

Options or Upgrades for Style WITC009

Bluetooth- Digital Clock-

Digital TV-Radio-

Mirror Frames-Magnifying Mirror-

Single/Dual Shaver Socket-

Mirror heating pad-

Infrared Sensor Switch-

Touch Switch / Press button Switch-

Side Diffusers-Night Light

